

OLHAUSEN BILLIARDS

MANUFACTURER OF GAME ROOM LIFESTYLES

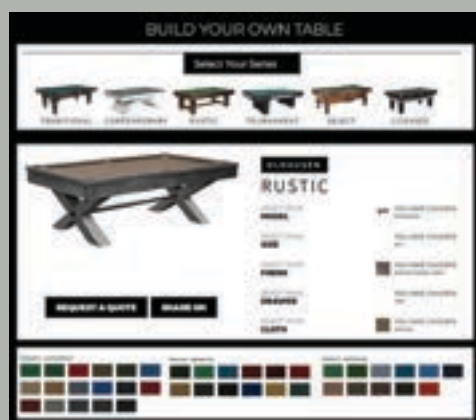


PRODUCT CATALOG





EXPLORE YOUR GAME TABLE ON OUR NEW WEBSITE



IMPROVED BUILDER

The consumer can request a quote directly from the BYOT application and a configuration of the table they are interested in will be emailed to the local dealer as a sales lead to contact and provide a quote for the selected table.



NEW INSPIRATION GALLERY

The inspiration gallery provides a single location to view numerous lifestyle photos of Olhausen customer game rooms throughout the country. This serves as an inspirational tool for dealers, consumers, and designers.



ORGANIZED COLLEGIATE PAGE

Our collegiate product section has been upgraded and organized to include a highlighted page for each school and an enhanced imagery of each school's logo and brand.



THE OLHAUSEN STORY

My brother Butch and I have a long family history in the billiard business that began more than 75 years ago when our grandfather became tired of growing corn in Hartley, Iowa. He sold the farm so that he could buy a pool room that was for sale. Our dad, Jerry Olhausen, learned a lot about pool tables before he left Hartley and he continued the family's involvement in the billiard industry when he started his own billiard sales and service business in Las Cruces, New Mexico in 1953. Both Butch and I worked for my dad while we were growing up in Las Cruces, but it wasn't until we both moved to California that our role in the Olhausen legacy would truly begin.

In the early 1970's, Butch and I arrived in San Diego, California with a shared passion for billiards that would become the foundation for the billiard manufacturing business that we built together. In 2006, that same passion brought the company to Portland, Tennessee, where my sons Colby and Jeff are now helping me run the largest pool table manufacturing facility in the world. This new state-of-the-art factory occupies over 250,000 square feet and even though our capacity to produce pool tables has greatly increased, our constant dedication to quality has not changed. Every Olhausen pool table is still built to order.

Manufacturing pool tables in California for more than 30 years put Olhausen Billiards at the forefront of environmental awareness and our move to Tennessee did not change that. We designed our new factory to be not only the largest producer of billiard tables in the industry, but also one of the most environmentally friendly facilities found anywhere in the world. In terms of sustainability, the relocation to Tennessee has put Olhausen Billiards much closer to both our lumber suppliers and our distributors. From our energy efficient factory to our continued use of the latest technology, Olhausen is building pool tables using methods that are best for our customers and best for the environment.

Since 1972, Olhausen has manufactured more than 600,000 pool tables using "American Made" craftsmanship in the design and construction of these tables. Our tables have become known in the industry as the "Best in Billiards" and we are very proud of that fact. We offer an endless variety of pool tables, from ornate pieces of furniture to professional tournament quality tables. No matter how they look on the outside, every Olhausen pool table has the same durable, award winning core on the inside...and that is why Olhausen Billiards can provide you with the highest quality pool table on the market and a true lifetime warranty from our family to yours.



Jerry Olhausen



ENCORE

Shown in Matte Natural Finish on Special Napa Veneer with Traditional X Style Leg

Sizes: 7 ft, 8 ft, 8 1/2 ft & 9 ft

Wood Material: Maple, Oak or Special Veneer

Finish Options: All Olhausen® Finishes on Maple or Oak and over 15 different options for Veneers

Drawer Option: Fits Under Frame



Shown in Matte Natural Finish on Special Monterey Veneer with Powder Coated Leg Option

HERITAGE

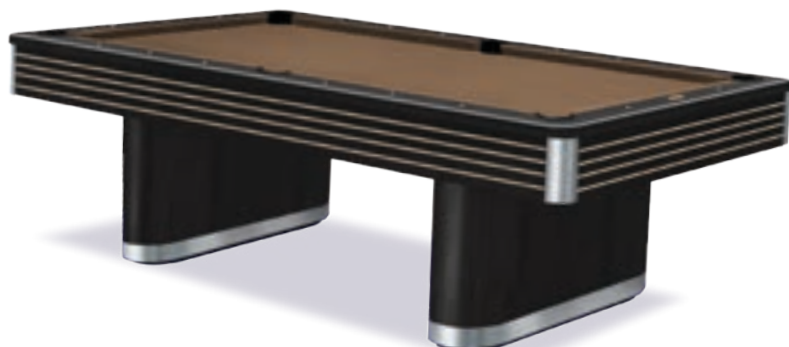
Shown in Matte Black Lacquer on Maple with Natural Maple Apron Accents and Brushed Aluminum Trim

Sizes: 7 ft, 8 ft, 8 1/2 ft, 9 ft, 10 ft & 12 ft

Wood Material: Maple

Finish Options: All Olhausen® Finishes

Drawer Option: Not Available



LAGUNA

Shown in Matte Traditional Mahogany Finish on Maple

Sizes: 7 ft, 8 ft, 8 1/2 ft & 9 ft

Wood Material: Maple, Oak, Cherry or Walnut

Finish Options: All Olhausen® Finishes

Drawer Option: Fits Under Frame



LANDMARK

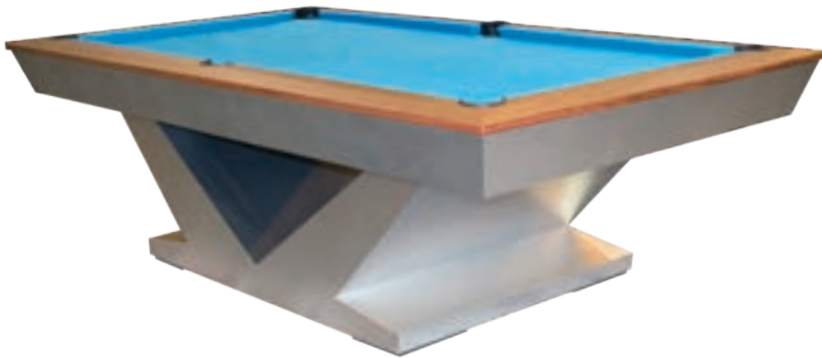
Shown in Brushed Aluminum Metal with
Oiled Natural Bubinga Rails

Sizes: 7 ft, 8 ft, 8 1/2 ft & 9 ft

Material: Laminate, Brushed Aluminum or
Decorative Metals Available with Maple Rails

Finish Options: All Olhausen® Finishes on Rails only

Drawer Option: Not Available



LUXOR

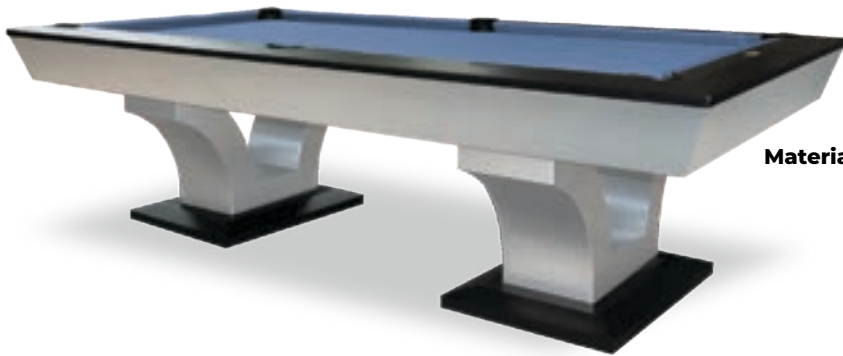
Shown in Brushed Aluminum Metal with
Matte Black Lacquer on Maple Rails and Leg Plates

Sizes: 7 ft, 8 ft, 8 1/2 ft, 9 ft, 10 ft & 12 ft

Material: Laminate, Brushed Aluminum or Decorative Metals
Available with Maple Rails and Leg Plates

Finish Options: All Olhausen® Finishes on
Rails and Leg Plates only

Drawer Option: Not Available



MADISON

Shown in Natural Cherry Finish on Cherry

Sizes: 6 ft, 7 ft, 8 ft, 8 1/2 ft, 9 ft, 10 ft & 12 ft

Wood Material: Maple, Oak, Cherry, Walnut or Laminate
*Upgraded Brushed Aluminum or
Decorative Metals Available*

Finish Options: All Olhausen® Finishes

Drawer Option: Fits Under Frame



MAXIM

Shown in Matte Coral Ash on Maple with Matte Black Lacquer on Maple Rails

Sizes: 7 ft, 8 ft, 8 1/2 ft & 9 ft

Wood Material: Maple, Oak, Cherry, Walnut or Laminate

*Upgraded Brushed Aluminum or
Decorative Metals Available*

Finish Options: All Olhausen® Finishes

Drawer Option: Not Available



MILLENNIUM

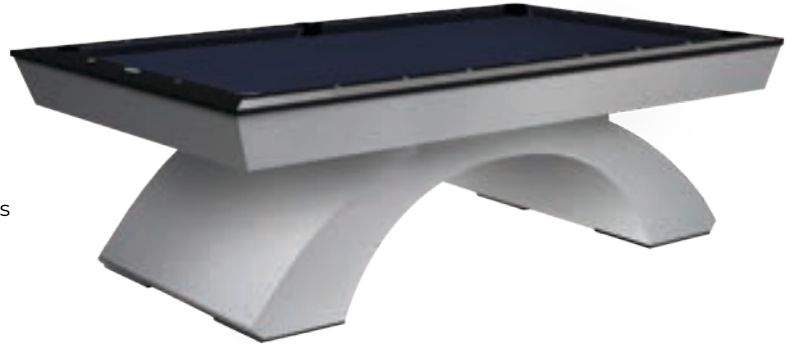
Shown in Brushed Aluminum Metal with Matte Black Lacquer on Maple Rails

Sizes: 7 ft, 8 ft, 8 1/2 ft & 9 ft

Wood Material: Brushed Aluminum with Hard Maple Rails

Finish Options: All Olhausen® Finishes on Rails only

Drawer Option: Not Available



MONARCH

Shown in Matte Smoke on Maple

Sizes: 6 ft, 7 ft, 8 ft, 8 1/2 ft, 9 ft, 10 ft & 12 ft

Wood Material: Maple, Oak, Cherry, Walnut or Laminate

*Upgraded Brushed Aluminum or
Decorative Metals Available*

Finish Options: All Olhausen® Finishes

Drawer Option: Not Available



PLAZA

Shown in Sienna Finish on Maple with
Brushed Aluminum Trim

Sizes: 7 ft, 8 ft, 8 1/2 ft, 9 ft, 10 ft & 12 ft

Wood Material: Maple, Oak, Cherry or Walnut

Metal Trim Options: Brushed Aluminum or
Decorative Metals Available

Finish Options: All Olhausen® Finishes

Drawer Option: Not Available





REGENT

Shown in Colorado Laminate

Sizes: 7 ft & 8 ft Only

Material: Laminate

Finish Options: Colorado or Arizona Laminate only

Drawer Option: Fits Under Frame



SAHARA

Shown in Natural Finish on Maple with
Brushed Aluminum Trim

Sizes: 7 ft, 8 ft, 8 1/2 f, 9 ft, 10 ft & 12 ft

Wood Material: Maple, Oak, Cherry or Walnut

Metal Trim Options: Brushed Aluminum or
Decorative Metals Available

Finish Options: All Olhausen® Finishes

Drawer Option: Not Available



WATERFALL

Shown in Brushed Aluminum Metal with Matte Black
Lacquer on Maple Rails

Sizes: 7 ft, 8 ft, 8 1/2 ft & 9 ft

Wood Material: Maple, Oak, Cherry, Walnut or Laminate

*Upgraded Brushed Aluminum or
Decorative Metals Available*

Finish Options: All Olhausen® Finishes

Drawer Option: Not Available





WEST END

Shown in Matte Smoke Finish on Maple

Sizes: 7 ft, 8 ft, 8 1/2 ft, 9 ft, 10 ft & 12 ft

Wood Material: Maple, Oak, Cherry or Walnut

Finish Options: All Olhausen® Finishes

Drawer Option: Fits Under Frame



YORK

Shown in Cinnamon Finish on Maple

Sizes: 6 ft, 7 ft, 8 ft, 8 1/2 ft, 9 ft, 10 ft & 12 ft

Wood Material: Maple, Oak, Cherry or Walnut

Finish Options: All Olhausen® Finishes

Drawer Option: Not Available





BRECKENRIDGE

Shown in Matte Breckenridge on Pine

Sizes: 6 ft, 7 ft, 8 ft, 8 1/2 ft, 9 ft, 10 ft & 12 ft

Wood Material: Pine

Finish Options: Matte Breckenridge Finish

Drawer Option: Fits Under Frame



DURANGO

Shown in Matte Breckenridge Finish on Pine

Sizes: 7 ft, 8 ft, 8 1/2 ft & 9 ft

Wood Material: Pine

Finish Options: Matte Fossil Grey or Matte Breckenridge Finish

Drawer Option: Fits Under Frame



PINEHAVEN

Shown in Matte Pinehaven Finish on Pine

Sizes: 7 ft, 8 ft, 8 1/2 ft & 9 ft

Wood Material: Pine

Finish Options: Matte Pinehaven Finish

Drawer Option: Fits Under Frame



PONDEROSA

Shown in Matte Medium Ponderosa Finish on Pine

Sizes: 7 ft, 8 ft, 8 1/2 ft & 9 ft

Wood Material: Pine

Finish Options: Matte Natural, Medium or Dark

Drawer Option: Built Into Frame



RAILYARD

Shown in Matte Railyard Finish on Hickory

Sizes: 7 ft, 8 ft & 9 ft

Wood Material: Hickory

Finish Options: Matte Railyard Finish

Drawer Option: Fits Under Frame

Special Features: Reclaimed Train Rail and Re-purposed Hardwood Timbers from Century Old Railroads and Round Date Nail Sites





SILVERTON

Shown in Matte Timber Ridge Finish on Pine
with Corrugated Metal Legs

Sizes: 6 ft, 7 ft, 8 ft, 8 1/2 ft, 9 ft, 10 ft & 12 ft

Wood Material: Pine

Finish Options: Matte Timber Ridge Finish

Drawer Option: Fits Under Frame



TAOS

Shown in Matte Taos Finish on Oak

Sizes: 7 ft, 8 ft, 8 1/2 ft & 9 ft

Wood Material: Maple or Oak

Finish Options: All Olhausen® Finishes

Drawer Option: Fits Under Frame



TIMBER RIDGE

Shown in Matte Timber Ridge Finish on Pine

Sizes: 7 ft, 8 ft, 8 1/2 ft & 9 ft

Wood Material: Pine

Finish Options: Matte Timber Ridge Finish

Drawer Option: Not Available



TUSTIN

Shown in Matte Weathered Oak Finish on Oak

Sizes: 7 ft, 8 ft, 8 1/2 ft & 9 ft

Wood Material: Maple or Oak

Finish Options: All Olhausen® Finishes

Drawer Option: Fits Under Frame



YOUNGSTOWN

Shown in Matte Youngstown Finish on Oak

Sizes: 7 ft, 8 ft, 8 1/2 ft & 9 ft

Wood Material: Maple or Oak

Finish Options: All Olhausen® Finishes

Drawer Option: Fits Under Frame





SEVILLE

Shown in Traditional Cherry Finish on Maple

Sizes: 7 ft, 8 ft, 8 1/2 ft, 9 ft, 10 ft & 12 ft

Wood Material: Maple, Oak, Cherry or Walnut

Finish Options: All Olhausen® Finishes

Drawer Option: Built Into Frame



ST. ANDREWS

Shown in Heritage Cherry Finish on Maple

Sizes: 7 ft, 8 ft, 8 1/2 ft, 9 ft, 10 ft & 12 ft

Wood Material: Maple, Oak, Cherry or Walnut

Finish Options: All Olhausen® Finishes

Drawer Option: Built Into Frame



ST. LEONE

Shown in Heritage Maple Finish on Maple

Sizes: 7 ft, 8 ft, 8 1/2 ft, & 9ft

Wood Material: Maple, Oak, Cherry or Walnut

Finish Options: All Olhausen® Finishes

Drawer Option: Built Into Frame



ST. GEORGE

Shown in Heritage Cherry Finish on Maple

Sizes: 7 ft, 8 ft, 8 1/2 ft, 9 ft, 10 ft & 12 ft

Wood Material: Maple, Oak, Cherry or Walnut

Finish Options: All Olhausen® Finishes

Drawer Option: Built Into Frame



VENETIAN

Shown in Matte Black Lacquer Finish on Maple
with 6 leg Upgrade

** Standard with 4 Legs **

Sizes: 7 ft, 8 ft, 8 1/2 ft, 9 ft, 10 ft & 12 ft

Wood Material: Maple, Oak, Cherry or Walnut

Finish Options: All Olhausen® Finishes

Drawer Option: Built Into Frame



WENTWORTH

Shown in American Maple Finish on Maple

Sizes: 7 ft, 8 ft, 8 1/2 ft, 9 ft, 10 ft & 12 ft

Wood Material: Maple, Oak, Cherry or Walnut

Finish Options: All Olhausen® Finishes

Drawer Option: Built Into Frame





AUGUSTA

Shown in American Walnut Finish on Oak

Sizes: 7 ft, 8 ft, 8 1/2 ft & 9 ft

Wood Material: Maple, Oak, Cherry or Walnut

Finish Options: All Olhausen® Finishes

Drawer Option: Built Into Frame



BELLE MEADE

Shown in Brandywine Finish on Maple

with 6 leg Upgrade

** Standard with 4 Legs **

Sizes: 7 ft, 8 ft, 8 1/2 ft, 9 ft, 10 ft & 12 ft

Wood Material: Maple, Oak, Cherry or Walnut

Finish Options: All Olhausen® Finishes

Drawer Option: Built Into Frame

- Not Available on 6 Leg-



BRENTWOOD

Shown in Matte Black Lacquer Finish on Maple

Sizes: 7 ft, 8 ft, 8 1/2 ft, 9 ft, 10 ft & 12 ft

Wood Material: Maple, Oak, Cherry or Walnut

Finish Options: All Olhausen® Finishes

Drawer Option: Built Into Frame



CHICAGO

Shown in Matte Black Lacquer Finish on Maple

Sizes: 7 ft, 8 ft, 8 1/2 ft & 9 ft

Wood Material: Maple, Oak, Cherry or Walnut

Finish Options: All Olhausen® Finishes

Drawer Option: Built Into Frame

INNSBRUCK

Shown in Traditional Pecan Finish on Maple

Sizes: 7 ft, 8 ft, 8 1/2 ft, 9 ft, 10ft & 12 ft

Wood Material: Maple, Oak, Cherry or Walnut

Finish Options: All Olhausen® Finishes

Drawer Option: Fits Under Frame



HUNTINGTON

Shown in Cinnamon Finish on Maple

Sizes: 7 ft, 8 ft, 8 1/2 ft, 9 ft, 10ft & 12 ft

Wood Material: Maple, Oak, Cherry or Walnut

Finish Options: All Olhausen® Finishes

Drawer Option: Fits Under Frame



KIRKWOOD

Shown in Traditional Mahogany on Maple

Sizes: 7 ft, 8 ft, 8 1/2 ft, 9 ft, 10ft & 12 ft

Wood Material: Maple, Oak, Cherry or Walnut

Finish Options: All Olhausen® Finishes

Drawer Option: Built Into Frame



METRO

Shown in Matte Coral Ash on Maple

Sizes: 7 ft, 8 ft, 8 1/2 ft & 9 ft

Wood Material: Maple, Oak, Cherry or Walnut

Finish Options: All Olhausen® Finishes

Drawer Option: Fits Under Frame





REMINGTON

Shown in Original Cherry Finish on Maple

Sizes: 7 ft, 8 ft, 8 1/2 ft, 9 ft, 10 ft & 12 ft

Wood Material: Maple, Oak, Cherry or Walnut

Finish Options: All Olhausen® Finishes

Drawer Option: Built Into Frame

SANTA ANA

Shown in Traditional Mahogany Finish on Maple

Sizes: 7 ft, 8 ft, 8 1/2 ft & 9 ft

Wood Material: Maple, Oak, Cherry or Walnut

Finish Options: All Olhausen® Finishes

Drawer Option: Built Into Frame



BLACKHAWK

Shown in Matte Black Lacquer and Matte Brandywine on Tulipwood

Sizes: 6 ft, 7 ft, 8 ft, 8 1/2 ft & 9 ft

Wood Material: Tulip

** Available in Maple, Oak, Cherry or Walnut **

Finish Options: All Olhausen® Finishes

Drawer Option: Built Into Frame



CLASSIC

Shown in Traditional Pecan Finish on Tulipwood

Sizes: 6 ft, 7 ft, 8 ft, 8 1/2 ft, 9 ft, 10 ft & 12 ft

Wood Material: Tulip

** Available in Maple, Oak, Cherry or Walnut **

Finish Options: All Olhausen® Finishes

Drawer Option: Fits Under Frame





ECLIPSE

Shown in Matte Spring Cherry Finish on Cherry

Sizes: 6 ft, 7 ft, 8 ft, 8 1/2 ft & 9 ft

Wood Material: Tulip

**** Available in Maple, Oak, Cherry or Walnut ****

Finish Options: All Olhausen® Finishes

Drawer Option: Built Into Frame



HAMPTON

Shown in Heritage Cherry Finish on Tulipwood

Sizes: 6 ft, 7 ft, 8 ft, 8 1/2 ft, 9 ft, 10 ft & 12 ft

Wood Material: Tulip

**** Available in Maple, Oak, Cherry or Walnut ****

Finish Options: All Olhausen® Finishes

Drawer Option: Built Into Frame



NASHVILLE

Shown in Matte Slate Finish on Tulipwood

Sizes: 6 ft, 7 ft, 8 ft, 8 1/2 ft, 9 ft, 10 ft & 12 ft

Wood Material: Tulip

**** Available in Maple, Oak, Cherry or Walnut ****

Finish Options: All Olhausen® Finishes

Drawer Option: Built Into Frame



RENO

Shown in Traditional Mahogany Finish on Tulipwood

Sizes: 6 ft, 7 ft, 8 ft, 8 1/2 ft & 9 ft

Wood Material: Tulip

Finish Options: All Olhausen® Finishes

Drawer Option: Not Available

SHERATON

Shown in Matte Fossil Grey Finish on Tulipwood

Sizes: 6 ft, 7 ft, 8 ft, 8 1/2 ft & 9 ft

Wood Material: Tulip

Finish Options: All Olhausen® Finishes

Drawer Option: Fits Under Frame



SOUTHERN

Shown in Cinnamon Finish on Tulipwood

Sizes: 6 ft, 7 ft, 8 ft, 8 1/2 ft, 9 ft, 10 ft & 12 ft

Wood Material: Tulip

* Available in Maple, Oak, Cherry or Walnut *

Finish Options: All Olhausen® Finishes

Drawer Option: Built Into Frame



AMERICANA

Shown in Matte Traditional Mahogany Finish on Tulipwood

Sizes: 7 ft & 8 ft

Wood Material: Tulip

Finish Options: Limited Finish Options

Drawer Option: Not Available



BELMONT

Shown in Matte Traditional Cherry Finish on Tulipwood

Sizes: 7 ft & 8 ft

Wood Material: Tulip

Finish Options: Limited Finish Options

Drawer Option: Not Available





RENO

Shown in Matte Black Laminate

Sizes: 6 ft, 7 ft, 8 ft, 8 1/2 ft, 9 ft

Laminate Material: Black Laminate Only

Drawer Option: Not Available



SHERATON

Shown in Matte Black Laminate

Sizes: 6 ft, 7 ft, 8 ft, 8 1/2 ft, 9 ft

Laminate Material: Black Laminate Only

Drawer Option: Fits Under Frame



CHAMPION PRO II

Shown in Black Laminate with Black Metal Trim

Sizes: 7 ft, 8 ft, 8 1/2 ft, 9 ft, 10 ft & 12 ft

Wood Material: Solid Poplar

Finish Options: Various Laminate Colors Available

* apron stickers available upon request *

Ball Return: Available



CHAMPION PRO II

Shown in Black Laminate with Black Metal Trim

Sizes: 7 ft, 8 ft, 8 1/2 ft, 9 ft, 10 ft & 12 ft

Wood Material: Solid Poplar

Finish Options: Various Laminate Colors Available

* apron stickers available upon request *

Ball Return: Available



GRAND CHAMPION II

Shown in Black Laminate with Black Metal Trim

Sizes: 7 ft, 8 ft, 8 1/2 ft, 9 ft, 10 ft & 12 ft

Wood Material: Solid Poplar

Finish Options: Various Laminate Colors Available

* apron stickers available upon request *

Ball Return: Available



GRAND CHAMPION III

Shown in Black Laminate with Black Metal Trim and
Brushed Aluminum Apron Reveals

Sizes: 7 ft, 8 ft, 8 1/2 ft, 9 ft, 10 ft & 12 ft

Wood Material: Solid Poplar

Finish Options: Various Laminate Colors Available

* apron stickers available upon request *

Ball Return: Available



OLHAUSEN®

WHY WE'RE THE BEST IN BILLIARDS!

(and why we're able to offer a lifetime warranty!)

ACCU-FAST®

- Accu-Fast® cushions are the best playing cushions in the business
- We invite you to take the Accu-Fast® Challenge: "JUST PLAY ON IT"



PREMIUM SLATE

- The world's finest slate is diamond honed to create the perfect playing surface
- Each piece of slate is rechecked at our factory for flatness and proper bolt-hole locations.



T-NUT RAIL CONSTRUCTION

- Won't bend and cross-thread
- Precise alignment
- Longer thread grip
- Easy installation and removal
- Eliminates hollow spots under cushions



FACTORY PRE-FIT FRAME CONSTRUCTION

- Built in our factory not in your home
- Pre-leveled and squared for faster, cleaner installation
- Allows for triple-check quality control before shipping
- KD-able for difficult installations



SLATE LINER

- Framing the slate ensures quieter play and reduces the stress on the slate
- Allows a tighter, faster, professional cloth installation
- We bolt through the slate liner to eliminate vibration that can cause the rail bolts to loosen



UNILINER

- Large slate-support area
- Quick, more accurate installation
- Helps keep slate flat and level
- Minimizes wood movement
- Uniliner® tested, almost twice as strong as other frame construction methods

PREMIUM WOOD

- Olhausen purchases the majority of its lumber from the Northeastern US where "slow-growth" trees have tighter grains
- Tighter grains mean minimal discoloring
- It's simple: Better wood makes for a better table

America's Favorite Pool Table



WE BUILD OUR POOL TABLES. WE STAND BEHIND THEM.
ALWAYS HAVE. ALWAYS WILL.

With Over 50 Years of Experience, Your Peace of Mind is Guaranteed
and so is Your Investment



PROUDLY MADE
IN THE USA

The Best in Billiards®

OLHAUSEN'S QUALITY LINE OF FINISHES

PROUDLY MADE IN THE USA

American Maple on Maple



Brandywine on Maple



Cinnamon on Maple



Heritage Cherry on Maple (\$)



Heritage Maple on Maple (\$)



Heritage Mahogany on Maple (\$)



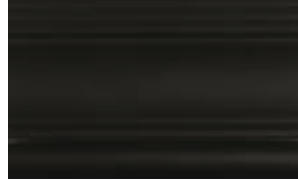
Ebony on Maple (\$)



Espresso on Maple



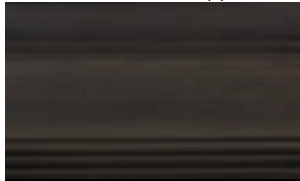
Matte Black Lacquer on Maple (\$)



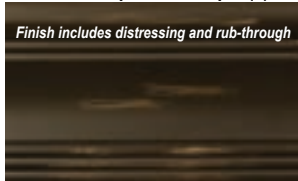
Matte Coral Ash on Maple



Matte Charcoal (\$)

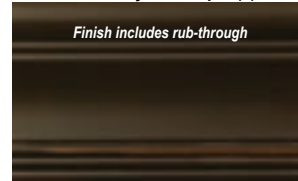


Matte Graphite on Maple (\$)



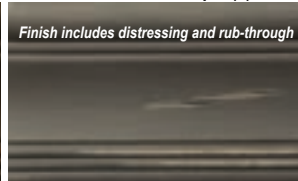
Finish includes distressing and rub-through

Matte Onyx on Maple (\$)



Finish includes rub-through

Matte Slate on Maple (\$)



Finish includes distressing and rub-through

Matte Smoke (\$)



Original Cherry on Maple



Oxblood on Maple



Sienna on Maple



Traditional Mahogany on Maple



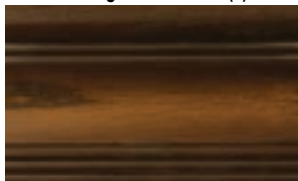
Traditional Pecan on Maple



American Walnut on Oak



Heritage Oak on Oak (\$)



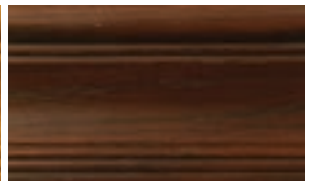
Matte Coral Ash on Oak



Natural on Oak



Sienna on Oak



Traditional Mahogany on Oak



Matte Weathered Oak (\$)



Brandywine on Tulipwood



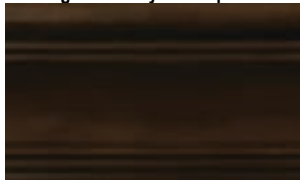
Cinnamon on Tulipwood



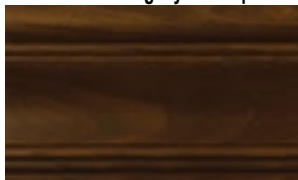
Matte Fossil Grey on Tulipwood



Original Cherry on Tulipwood



Traditional Mahogany on Tulipwood



Natural on Hard Rock Maple (\$)



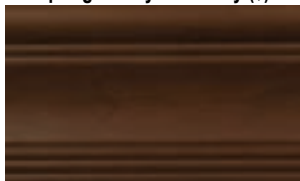
Matte Natural on Walnut (\$)



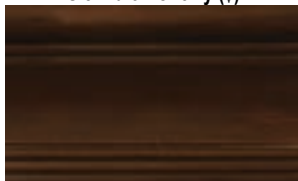
Matte Natural on Cherry (\$)



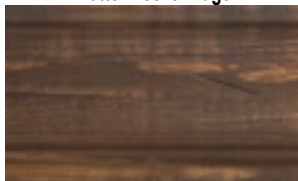
Spring Cherry on Cherry (\$)



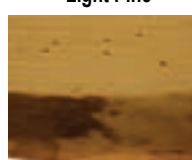
Sienna on Cherry (\$)



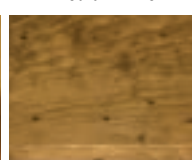
Matte Breckenridge



Light Pine



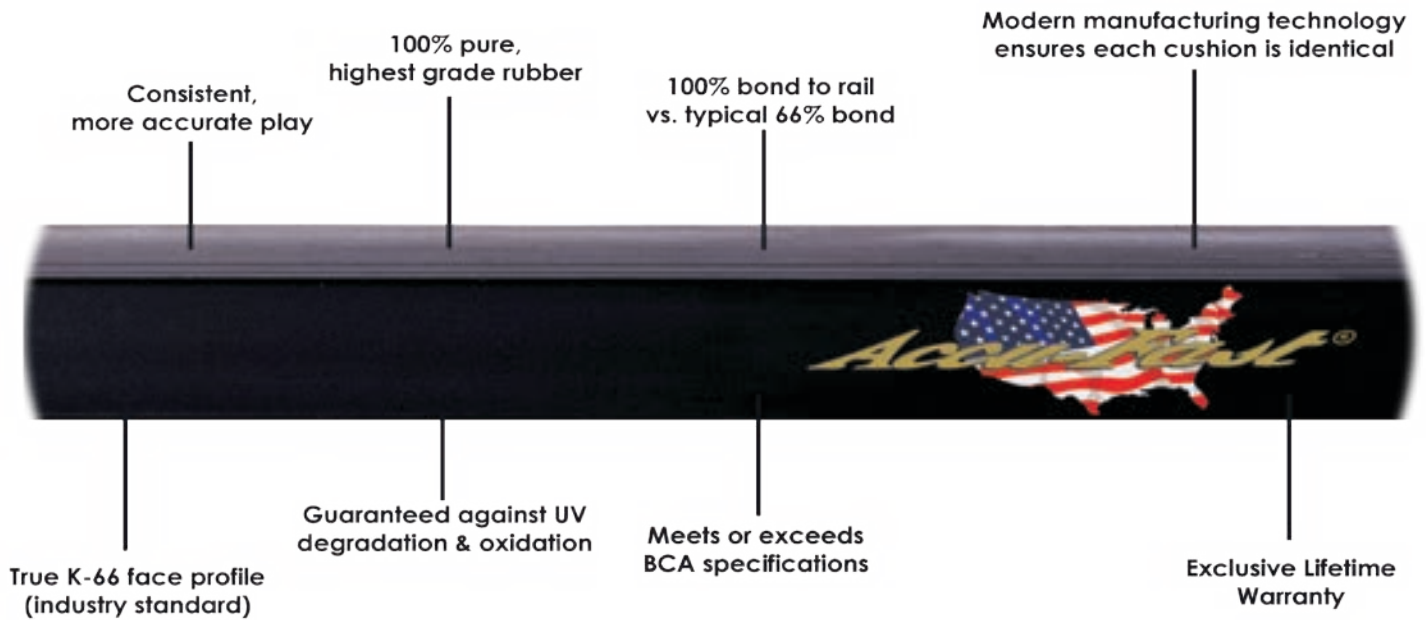
Medium Pine



Dark Pine



OLHAUSEN'S EXCLUSIVE ACCU-FAST CUSHIONS MADE IN THE USA!



THE CHART BELOW WILL HELP YOU DETERMINE THE TABLE SIZE THAT'S BEST FOR YOUR GAME ROOM. THE 8FT IS THE MOST POPULAR SIZE TABLE FOR THE HOME.

** The standard cue length is 58" **

		Minimum Room Size According to Cue Length		
		48 in	52 in	58 in
OVERALL TABLE SIZES	ACTUAL PLAYING SURFACE			
7 FT.	39" x 78"	11' 3" x 14' 6"	11' 11" x 15' 2"	12' 11" x 16' 2"
8 FT.	44" x 88"	11' 8" x 15' 4"	12' 4" x 16'	13' 4" x 17'
8.5 FT.	46" x 92"	11' 10" x 15' 8"	12' 6" x 16' 4"	13' 6" x 17' 4"
9 FT.	50" x 100"	12' 2" x 16' 4"	12' 10" x 17'	13' 10" x 18'

R&R OUTDOORS

LIFE IS BETTER PLAYED OUTSIDE

NOW
MANUFACTURED BY
OLHAUSEN®
The Built in Billiards

Features & Benefits:

- 10 POWDER COAT CHOICES TO MATCH YOUR OUTDOOR AREA
- MARINE GRADE ALUMINUM – BUILT LIKE A BOAT
- 3-PIECE 1" BRAZILIAN SLATE – FEATURING ACCU-FAST CUSHIONS
- AUTHENTIC SUNBRELLA SURFACE – LEGS WITH LEVELERS FOR PERFECT PLAY

RANDROUTDOORFUN.COM

OLHAUSEN®

WHY WE'RE THE BEST IN SHUFFLEBOARDS!

Solid American
Maple Playfield

Durable Two Part Polymer
Playing Surface

American Hardwood
Construction with
1 1/2" Thick Solid
Cabinets

Available in Over
30 Unique Models
and Finishes

Exclusive Accu-Lock
Leveling System -
Ensures perfect level and eliminates
time consuming re-adjustments
associated with conventional
adjusters

Multiple Leg Options -
We have leg designs that will
fit in any room decor

Cross Brace
Construction -
Added rigidity to ensure
table stability

Custom Graphics
Available -
Have your playfield
personalized with your own
custom logo

American Made -
Not only assembled in our factory,
but designed, engineered and built
in the USA



OLHAUSEN SHUFFLEBOARD TABLES

FEATURING THE EXCLUSIVE ACCU-LOCK®
PLAYFIELD ADJUSTMENT SYSTEM

With Over 50 Years of Experience, Your Peace of Mind is Guaranteed
and so is Your Investment



PROUDLY MADE
IN THE USA

ALCOVE

Shown in Matte Black Lacquer on Maple

Sizes: 9 ft, 12 ft, 14 ft

Playfield: 20" Solid Maple with 1/4" polymere surface

Wood Material: Maple or Oak

Finish Options: All Olhausen® Finishes



ENCORE

Shown in Traditional Mahogany Finish on Maple

Sizes: 9 ft, 12 ft, 14 ft, 16 ft, 18 ft, 20 ft & 22 ft

Playfield: 20" Solid Maple with 1/4" polymere surface

Wood Material: Maple, Oak or Special Veneer

Finish Options: All Olhausen® Finishes and Special Veneer Finshes



HERITAGE

Shown in Matte Lacquer Finish on Maple with Natural Maple Apron Accents and Brushed Aluminum Trim

Sizes: 9 ft, 12 ft, 14 ft, 16 ft, 18 ft, 20 ft & 22 ft

Playfield: 20" Solid Maple with 1/4" polymere surface

Wood Material: Maple

Finish Options: All Olhausen® Finishes



LAGUNA

Shown in Matte Traditional Mahogany on Maple

Sizes: 9 ft, 12 ft, 14 ft, 16 ft, 18 ft, 20 ft & 22 ft

Playfield: 20" Solid Maple with 1/4" polymere surface

Wood Material: Maple, Oak, Cherry or Walnut

Finish Options: All Olhausen® Finishes





MADISON

Shown in Matte Black Lacquer on Maple

Sizes: 9 ft, 12 ft, 14 ft, 16 ft, 18 ft, 20 ft & 22 ft

Playfield: 20" Solid Maple with 1/4" polymere surface

Wood Material: Maple, Oak, Cherry, Walnut or Laminate

* upgraded brushed or polished aluminum available *

Finish Options: All Olhausen® Finishes



MAVERICK

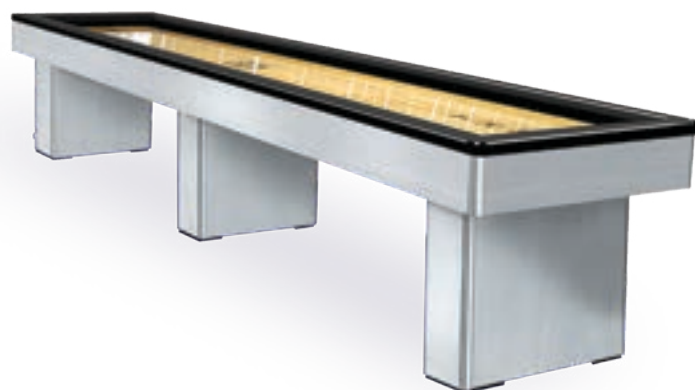
Shown in Matte Fossil Grey on Tulipwood

Size: 9 ft only

Playfield: 20" Solid Maple with 1/4" polymere surface

Wood Material: Tulip

Finish Options: Matte Fossil Grey only



MONARCH

Shown in Brushed Aluminum Metal with
Matte Black Lacquer on Maple Rails

Sizes: 9 ft, 12 ft, 14 ft, 16 ft, 18 ft, 20 ft & 22 ft

Playfield: 20" Solid Maple with 1/4" polymere surface

Wood Material: Maple, Oak, Cherry, Walnut or Laminate

* upgraded brushed or polished aluminum available *

Finish Options: All Olhausen® Finishes

REGENT

Shown in Colorado Laminate and Brushed Aluminum

Sizes: 12 ft, 14 ft & 16 ft

Playfield: 20" Solid Maple with 1/4" polymere surface

Wood Material: Special Laminate and Brushed Aluminum

Finish Options: Colorado or Arizona Laminate only



SAHARA

Shown in Matte Black Lacquer Finish on Maple with Brushed Aluminum Trim

Sizes: 9 ft, 12 ft, 14 ft, 16 ft, 18 ft, 20 ft & 22 ft

Playfield: 20" Solid Maple with 1/4" polymere surface

Wood Material: Maple, Oak, Cherry or Walnut

Finish Options: All Olhausen® Finishes



WATERFALL

Shown in Brushed Aluminum with Matte Black Rails

Sizes: 9 ft, 12 ft, 14 ft, 16 ft & 18 ft

Playfield: 20" Solid Maple with 1/4" polymere surface

Wood Material: Maple, Oak, Cherry, Walnut or Laminate

* upgraded brushed or polished aluminum available *

Finish Options: All Olhausen® Finishes



WEST END

Shown in Matte Smoke Finish on Maple

Sizes: 9 ft, 12 ft, 14 ft, 16 ft, 18 ft, 20 ft & 22 ft

Playfield: 20" Solid Maple with 1/4" polymere surface

Wood Material: Maple, Oak, Cherry or Walnut

Finish Options: All Olhausen® Finishes





YORK

Shown in Cinnamon Finish on Maple

Sizes: 9 ft, 12 ft, 14 ft, 16 ft, 18 ft, 20 ft & 22 ft

Playfield: 16" & 20" Solid Maple with
1/4" polymere surface

Wood Material: Maple, Oak, Cherry or Walnut

Finish Options: All Olhausen® Finishes

Every Olhausen Shuffleboard features



Exclusive
Accu-Lock
leveling
system



Made in
the USA



Custom
Logo on
Playfield
Option



Lifetime
Warranty



BRECKENRIDGE

Shown in Matte Breckenridge Finish on Pine

Sizes: 9 ft, 12 ft, 14 ft, 16 ft, 18 ft, 20 ft & 22 ft

Playfield: 20" Solid Maple with 1/4" polymere surface

Wood Material: Pine

Finish Options: Matte Breckenridge Finish



DURANGO

Shown in Matte Fossil Grey on Pine

Sizes: 9 ft, 12 ft, 14 ft, 16 ft, 18 ft, 20 ft & 22 ft

Playfield: 20" Solid Maple with 1/4" polymere surface

Wood Material: Pine

Finish Options: Matte Fossil Grey or
Matte Breckenridge only





PONDEROSA

Shown in Matte Medium Finish on Pine

Sizes: 9 ft, 12 ft, 14 ft, 16 ft, 18 ft, 20 ft & 22 ft

Playfield: 20" Solid Maple with 1/4" polymere surface

Wood Material: Pine

Finish Options: Light, Medium or Dark Finish only



RAILYARD

Shown in Matte Railyard Finish on Hickory

Sizes: 9 ft, 12 ft, 14 ft, 16 ft, 18 ft, 20 ft & 22 ft

Playfield: 20" Solid Maple with 1/4" polymere surface

Wood Material: Hickory

Finish Options: Matte Railyard Finish

Special Features: Reclaimed Train Rail and Re-purposed Hardwood Timbers from Century Old Railroads



TAOS

Shown in Matte Taos Finish on Oak

Sizes: 9 ft, 12 ft, 14 ft, 16 ft, 18 ft, 20 ft & 22 ft

Playfield: 20" Solid Maple with 1/4" polymere surface

Wood Material: Maple or Oak

Finish Options: All Olhausen® Finishes



TIMBER RIDGE

Shown in Matte Timber Ridge Finish on Pine

Sizes: 9 ft, 12 ft, 14 ft, 16 ft, 18 ft, 20 ft & 22 ft

Playfield: 20" Solid Maple with 1/4" polymere surface

Wood Material: Pine

Finish Options: Matte Timber Ridge Finish





TUSTIN

Shown in Matte Weathered Oak Finish on Oak

Sizes: 9 ft, 12 ft, 14 ft, 16 ft, 18 ft, 20 ft & 22 ft

Playfield: 20" Solid Maple with 1/4" polymere surface

Wood Material: Maple or Oak

Finish Options: All Olhausen® Finishes



YOUNGSTOWN

Shown in Matte Youngstown Finish on Oak

Sizes: 9 ft, 12 ft, 14 ft, 16 ft, 18 ft, 20 ft & 22 ft

Playfield: 16" Solid Maple with 1/4" polymere surface

Wood Material: Maple or Oak

Finish Options: All Olhausen® Finishes



ST. ANDREWS I

Shown in Heritage Mahogany Finish on Maple

Sizes: 9 ft, 12 ft, 14 ft, 16 ft, 18 ft, 20 ft & 22 ft

Playfield: 20" Solid Maple with 1/4" polymere surface

Wood Material: Maple, Oak, Cherry or Walnut

Finish Options: All Olhausen® Finishes



ST. ANDREWS III

Shown in Heritage Mahogany Finish on Maple

Sizes: 9 ft, 12 ft, 14 ft, 16 ft, 18 ft, 20 ft & 22 ft

Playfield: 20" Solid Maple with 1/4" polymere surface

Wood Material: Maple, Oak, Cherry or Walnut

Finish Options: All Olhausen® Finishes





ST. GEORGE

Shown in American Maple on Oak

Sizes: 9 ft, 12 ft, 14 ft, 16 ft, 18 ft, 20 ft & 22 ft

Playfield: 20" Solid Maple with 1/4" polymere surface

Wood Material: Maple, Oak, Cherry or Walnut

Finish Options: All Olhausen® Finishes



ST. LEONE

Shown in Matte Custom Finish on Maple

Sizes: 14 ft, 16 ft & 22 ft

Playfield: 20" Solid Maple with 1/4" polymere surface

Wood Material: Maple, Oak, Cherry or Walnut

Finish Options: All Olhausen® Finishes



VENETIAN

Shown in Matte Black Lacquer Finish on Maple

Sizes: 9 ft, 12 ft, 14 ft, 16 ft, 18 ft, 20 ft & 22 ft

Playfield: 20" Solid Maple with 1/4" polymere surface

Wood Material: Maple, Oak, Cherry or Walnut

Finish Options: All Olhausen® Finishes





BRENTWOOD

Shown in Matte Custom Finish on Maple

Sizes: 9 ft, 12 ft, 14 ft, 16 ft, 18 ft, 20 ft & 22 ft

Playfield: 20" Solid Maple with 1/4" polymere surface

Wood Material: Maple, Oak, Cherry or Walnut

Finish Options: All Olhausen® Finishes



CHICAGO

Shown in Cinnamon Finish on Maple

Sizes: 9 ft, 12 ft, 14 ft, 16 ft, 18 ft, 20 ft & 22 ft

Playfield: 20" Solid Maple with 1/4" polymere surface

Wood Material: Maple, Oak, Cherry or Walnut

Finish Options: All Olhausen® Finishes



ECLIPSE

Shown in Espresso Finish on Maple

Sizes: 9 ft, 12 ft, 14 ft, 16 ft, 18 ft, 20 ft & 22 ft

Playfield: 20" Solid Maple with 1/4" polymere surface

Wood Material: Maple, Oak, Cherry or Walnut

Finish Options: All Olhausen® Finishes

Leg Options: 12 different leg options available





HAMPTON

Shown in Heritage Mahogany Finish on Tulipwood

Sizes: 9 ft, 12 ft, 14 ft, 16 ft, 18 ft, 20 ft & 22 ft

Playfield: 20" Solid Maple with 1/4" polymere surface

Wood Material: Tulip

(Available in Maple, Oak, Cherry or Walnut)

Finish Options: All Olhausen® Finishes



PAVILION

Shown in Cinnamon Finish on Tulipwood

Sizes: 9 ft, 12 ft & 14 ft

Playfield: 16" Solid Maple with 1/4" polymere surface

Wood Material: Tulip

Finish Options: All Olhausen® Finishes



REMINGTON

Shown in Matte Custom Finish on Maple

Sizes: 9 ft, 12 ft, 14 ft, 16 ft, 18 ft, 20 ft & 22 ft

Playfield: 20" Solid Maple with 1/4" polymere surface

Wood Material: Maple, Oak, Cherry or Walnut

Finish Options: All Olhausen® Finishes



1124 Vaughn Parkway, Portland TN 37148
Phone (615) 323-8522 • Fax (615) 323-7585
Toll Free (800) 866-4606

www.olhausenbilliards.com