

# OLHAUSEN BILLIARDS

MANUFACTURER OF GAME ROOM LIFESTYLES



PRODUCT CATALOG





## EXPLORE YOUR GAME TABLE ON OUR NEW WEBSITE



### IMPROVED BUILDER

The consumer can request a quote directly from the BYOT application and a configuration of the table they are interested in will be emailed to the local dealer as a sales lead to contact and provide a quote for the selected table.



### NEW INSPIRATION GALLERY

The inspiration gallery provides a single location to view numerous lifestyle photos of Olhausen customer game rooms throughout the country. This serves as an inspirational tool for dealers, consumers, and designers.



### ORGANIZED COLLEGIATE PAGE

Our collegiate product section has been upgraded and organized to include a highlighted page for each school and an enhanced imagery of each school's logo and brand.



## THE OLHAUSEN STORY

My brother Butch and I have a long family history in the billiard business that began more than 75 years ago when our grandfather became tired of growing corn in Hartley, Iowa. He sold the farm so that he could buy a pool room that was for sale. Our dad, Jerry Olhausen, learned a lot about pool tables before he left Hartley and he continued the family's involvement in the billiard industry when he started his own billiard sales and service business in Las Cruces, New Mexico in 1953. Both Butch and I worked for my dad while we were growing up in Las Cruces, but it wasn't until we both moved to California that our role in the Olhausen legacy would truly begin.

In the early 1970's, Butch and I arrived in San Diego, California with a shared passion for billiards that would become the foundation for the billiard manufacturing business that we built together. In 2006, that same passion brought the company to Portland, Tennessee, where my sons Colby and Jeff are now helping me run the largest pool table manufacturing facility in the world. This new state-of-the-art factory occupies over 250,000 square feet and even though our capacity to produce pool tables has greatly increased, our constant dedication to quality has not changed. Every Olhausen pool table is still built to order.

Manufacturing pool tables in California for more than 30 years put Olhausen Billiards at the forefront of environmental awareness and our move to Tennessee did not change that. We designed our new factory to be not only the largest producer of billiard tables in the industry, but also one of the most environmentally friendly facilities found anywhere in the world. In terms of sustainability, the relocation to Tennessee has put Olhausen Billiards much closer to both our lumber suppliers and our distributors. From our energy efficient factory to our continued use of the latest technology, Olhausen is building pool tables using methods that are best for our customers and best for the environment.

Since 1972, Olhausen has manufactured more than 600,000 pool tables using "American Made" craftsmanship in the design and construction of these tables. Our tables have become known in the industry as the "Best in Billiards" and we are very proud of that fact. We offer an endless variety of pool tables, from ornate pieces of furniture to professional tournament quality tables. No matter how they look on the outside, every Olhausen pool table has the same durable, award winning core on the inside...and that is why Olhausen Billiards can provide you with the highest quality pool table on the market and a true lifetime warranty from our family to yours.



*Jerry Olhausen*



## ENCORE

Shown in Matte Natural Finish on Special Napa Veneer with Traditional X Style Leg

**Sizes:** 7 ft, 8 ft, 8 1/2 ft & 9 ft

**Wood Material:** Maple, Oak or Special Veneer

**Finish Options:** All Olhausen® Finishes on Maple or Oak and over 15 different options for Veneers

**Drawer Option:** Fits Under Frame



Shown in Matte Natural Finish on Special Monterey Veneer with Powder Coated Leg Option

## HERITAGE

Shown in Matte Black Lacquer on Maple with Natural Maple Apron Accents and Brushed Aluminum Trim

**Sizes:** 7 ft, 8 ft, 8 1/2 ft, 9 ft, 10 ft & 12 ft

**Wood Material:** Maple

**Finish Options:** All Olhausen® Finishes

**Drawer Option:** Not Available



# LAGUNA

Shown in Matte Traditional Mahogany Finish on Maple

**Sizes:** 7 ft, 8 ft, 8 1/2 ft & 9 ft

**Wood Material:** Maple, Oak, Cherry or Walnut

**Finish Options:** All Olhausen® Finishes

**Drawer Option:** Fits Under Frame



# LANDMARK

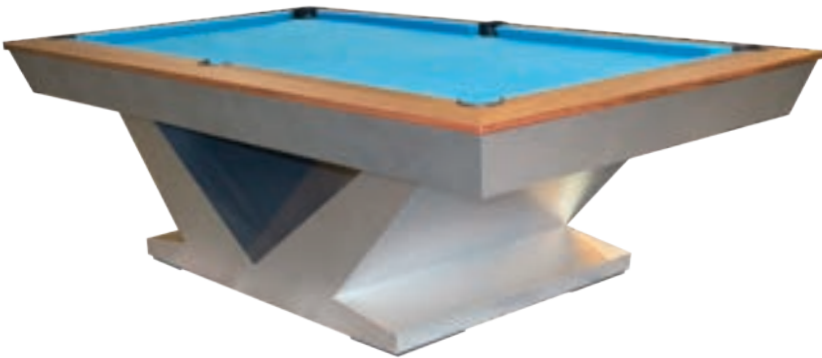
Shown in Brushed Aluminum Metal with  
Oiled Natural Bubinga Rails

**Sizes:** 7 ft, 8 ft, 8 1/2 ft & 9 ft

**Material:** Laminate, Brushed Aluminum or  
Decorative Metals Available with Maple Rails

**Finish Options:** All Olhausen® Finishes on Rails only

**Drawer Option:** Not Available



# LUXOR

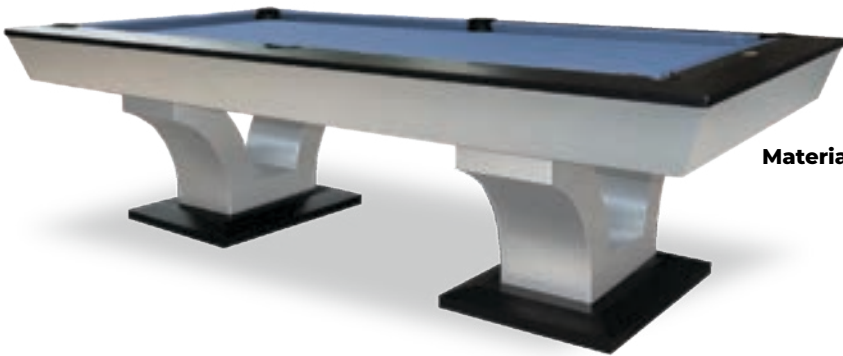
Shown in Brushed Aluminum Metal with  
Matte Black Lacquer on Maple Rails and Leg Plates

**Sizes:** 7 ft, 8 ft, 8 1/2 f, 9 ft, 10 ft & 12 ft

**Material:** Laminate, Brushed Aluminum or Decorative Metals  
Available with Maple Rails and Leg Plates

**Finish Options:** All Olhausen® Finishes on  
Rails and Leg Plates only

**Drawer Option:** Not Available



# MADISON

Shown in Natural Cherry Finish on Cherry

**Sizes:** 6 ft, 7 ft, 8 ft, 8 1/2 ft, 9 ft, 10 ft & 12 ft

**Wood Material:** Maple, Oak, Cherry, Walnut or Laminate  
\*Upgraded Brushed Aluminum or  
Decorative Metals Available\*

**Finish Options:** All Olhausen® Finishes

**Drawer Option:** Fits Under Frame



# MAXIM

Shown in Matte Coral Ash on Maple with Matte Black Lacquer on Maple Rails

**Sizes:** 7 ft, 8 ft, 8 1/2 ft & 9 ft

**Wood Material:** Maple, Oak, Cherry, Walnut or Laminate

\*Upgraded Brushed Aluminum or Decorative Metals Available\*

**Finish Options:** All Olhausen® Finishes

**Drawer Option:** Not Available



# MILLENNIUM

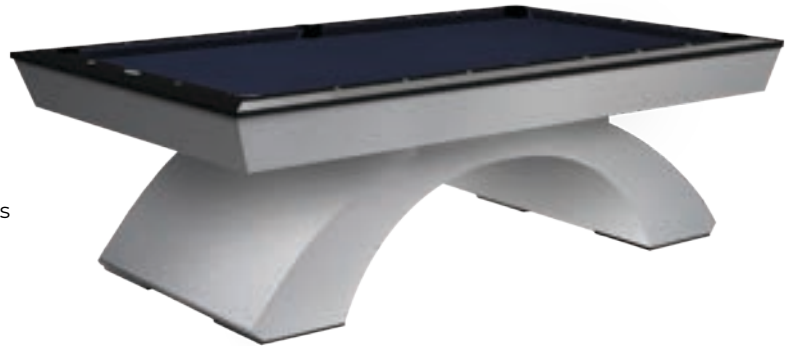
Shown in Brushed Aluminum Metal with Matte Black Lacquer on Maple Rails

**Sizes:** 7 ft, 8 ft, 8 1/2 ft & 9 ft

**Wood Material:** Brushed Aluminum with Hard Maple Rails

**Finish Options:** All Olhausen® Finishes on Rails only

**Drawer Option:** Not Available



# MONARCH

Shown in Matte Smoke on Maple

**Sizes:** 6 ft, 7 ft, 8 ft, 8 1/2 ft, 9 ft, 10 ft & 12 ft

**Wood Material:** Maple, Oak, Cherry, Walnut or Laminate

\*Upgraded Brushed Aluminum or Decorative Metals Available\*

**Finish Options:** All Olhausen® Finishes

**Drawer Option:** Not Available



# PLAZA

Shown in Sienna Finish on Maple with Brushed Aluminum Trim

**Sizes:** 7 ft, 8 ft, 8 1/2 ft, 9 ft, 10 ft & 12 ft

**Wood Material:** Maple, Oak, Cherry or Walnut

**Metal Trim Options:** Brushed Aluminum or Decorative Metals Available

**Finish Options:** All Olhausen® Finishes

**Drawer Option:** Not Available





## REGENT

Shown in Colorado Laminate

**Sizes:** 7 ft & 8 ft Only

**Material:** Laminate

**Finish Options:** Colorado or Arizona Laminate only

**Drawer Option:** Fits Under Frame



## SAHARA

Shown in Natural Finish on Maple with  
Brushed Aluminum Trim

**Sizes:** 7 ft, 8 ft, 8 1/2 f, 9 ft, 10 ft & 12 ft

**Wood Material:** Maple, Oak, Cherry or Walnut

**Metal Trim Options:** Brushed Aluminum or  
Decorative Metals Available

**Finish Options:** All Olhausen® Finishes

**Drawer Option:** Not Available



## WATERFALL

Shown in Brushed Aluminum Metal with Matte Black  
Lacquer on Maple Rails

**Sizes:** 7 ft, 8 ft, 8 1/2 ft & 9 ft

**Wood Material:** Maple, Oak, Cherry, Walnut or Laminate  
\*Upgraded Brushed Aluminum or  
Decorative Metals Available\*

**Finish Options:** All Olhausen® Finishes

**Drawer Option:** Not Available





## WEST END

Shown in Matte Smoke Finish on Maple

**Sizes:** 7 ft, 8 ft, 8 1/2 ft, 9 ft, 10 ft & 12 ft

**Wood Material:** Maple, Oak, Cherry or Walnut

**Finish Options:** All Olhausen® Finishes

**Drawer Option:** Fits Under Frame



## YORK

Shown in Cinnamon Finish on Maple

**Sizes:** 6 ft, 7 ft, 8 ft, 8 1/2 ft, 9 ft, 10 ft & 12 ft

**Wood Material:** Maple, Oak, Cherry or Walnut

**Finish Options:** All Olhausen® Finishes

**Drawer Option:** Not Available







# BRECKENRIDGE

Shown in Matte Breckenridge on Pine

**Sizes:** 6 ft, 7 ft, 8 ft, 8 1/2 ft, 9 ft, 10 ft & 12 ft

**Wood Material:** Pine

**Finish Options:** Matte Breckenridge Finish

**Drawer Option:** Fits Under Frame



# DURANGO

Shown in Matte Breckenridge Finish on Pine

**Sizes:** 7 ft, 8 ft, 8 1/2 ft & 9 ft

**Wood Material:** Pine

**Finish Options:** Matte Fossil Grey or Matte Breckenridge Finish

**Drawer Option:** Fits Under Frame



# PINEHAVEN

Shown in Matte Pinehaven Finish on Pine

**Sizes:** 7 ft, 8 ft, 8 1/2 ft & 9 ft

**Wood Material:** Pine

**Finish Options:** Matte Pinehaven Finish

**Drawer Option:** Fits Under Frame



# PONDEROSA

Shown in Matte Medium Ponderosa Finish on Pine

**Sizes:** 7 ft, 8 ft, 8 1/2 ft & 9 ft

**Wood Material:** Pine

**Finish Options:** Matte Natural, Medium or Dark

**Drawer Option:** Built Into Frame



# RAILYARD

Shown in Matte Railyard Finish on Hickory

**Sizes:** 7 ft, 8 ft & 9 ft

**Wood Material:** Hickory

**Finish Options:** Matte Railyard Finish

**Drawer Option:** Fits Under Frame

**Special Features:** Reclaimed Train Rail and Re-purposed Hardwood Timbers from Century Old Railroads and Round Date Nail Sites





## SILVERTON

Shown in Matte Timber Ridge Finish on Pine  
with Corrugated Metal Legs

**Sizes:** 6 ft, 7 ft, 8 ft, 8 1/2 ft, 9 ft, 10 ft & 12 ft

**Wood Material:** Pine

**Finish Options:** Matte Timber Ridge Finish

**Drawer Option:** Fits Under Frame



## TAOS

Shown in Matte Taos Finish on Oak

**Sizes:** 7 ft, 8 ft, 8 1/2 ft & 9 ft

**Wood Material:** Maple or Oak

**Finish Options:** All Olhausen® Finishes

**Drawer Option:** Fits Under Frame



## TIMBER RIDGE

Shown in Matte Timber Ridge Finish on Pine

**Sizes:** 7 ft, 8 ft, 8 1/2 ft & 9 ft

**Wood Material:** Pine

**Finish Options:** Matte Timber Ridge Finish

**Drawer Option:** Not Available



## TUSTIN

Shown in Matte Weathered Oak Finish on Oak

**Sizes:** 7 ft, 8 ft, 8 1/2 ft & 9 ft

**Wood Material:** Maple or Oak

**Finish Options:** All Olhausen® Finishes

**Drawer Option:** Fits Under Frame



## YOUNGSTOWN

Shown in Matte Youngstown Finish on Oak

**Sizes:** 7 ft, 8 ft, 8 1/2 ft & 9 ft

**Wood Material:** Maple or Oak

**Finish Options:** All Olhausen® Finishes

**Drawer Option:** Fits Under Frame





## SEVILLE

Shown in Traditional Cherry Finish on Maple

**Sizes:** 7 ft, 8 ft, 8 1/2 ft, 9 ft, 10 ft & 12 ft

**Wood Material:** Maple, Oak, Cherry or Walnut

**Finish Options:** All Olhausen® Finishes

**Drawer Option:** Built Into Frame



## ST. ANDREWS

Shown in Heritage Cherry Finish on Maple

**Sizes:** 7 ft, 8 ft, 8 1/2 ft, 9 ft, 10 ft & 12 ft

**Wood Material:** Maple, Oak, Cherry or Walnut

**Finish Options:** All Olhausen® Finishes

**Drawer Option:** Built Into Frame



## ST. LEONE

Shown in Heritage Maple Finish on Maple

**Sizes:** 7 ft, 8 ft, 8 1/2 ft, & 9ft

**Wood Material:** Maple, Oak, Cherry or Walnut

**Finish Options:** All Olhausen® Finishes

**Drawer Option:** Built Into Frame



## ST. GEORGE

Shown in Heritage Cherry Finish on Maple

**Sizes:** 7 ft, 8 ft, 8 1/2 ft, 9 ft, 10 ft & 12 ft

**Wood Material:** Maple, Oak, Cherry or Walnut

**Finish Options:** All Olhausen® Finishes

**Drawer Option:** Built Into Frame



## VENETIAN

Shown in Matte Black Lacquer Finish on Maple with 6 leg Upgrade

\*\* Standard with 4 Legs \*\*

**Sizes:** 7 ft, 8 ft, 8 1/2 ft, 9 ft, 10 ft & 12 ft

**Wood Material:** Maple, Oak, Cherry or Walnut

**Finish Options:** All Olhausen® Finishes

**Drawer Option:** Built Into Frame



## WENTWORTH

Shown in American Maple Finish on Maple

**Sizes:** 7 ft, 8 ft, 8 1/2 ft, 9 ft, 10 ft & 12 ft

**Wood Material:** Maple, Oak, Cherry or Walnut

**Finish Options:** All Olhausen® Finishes

**Drawer Option:** Built Into Frame





# AUGUSTA

Shown in American Walnut Finish on Oak

**Sizes:** 7 ft, 8 ft, 8 1/2 ft & 9 ft

**Wood Material:** Maple, Oak, Cherry or Walnut

**Finish Options:** All Olhausen® Finishes

**Drawer Option:** Built Into Frame



# BELLE MEADE

Shown in Brandywine Finish on Maple  
with 6 leg Upgrade

\*\* Standard with 4 Legs \*\*

**Sizes:** 7 ft, 8 ft, 8 1/2 ft, 9 ft, 10 ft & 12 ft

**Wood Material:** Maple, Oak, Cherry or Walnut

**Finish Options:** All Olhausen® Finishes

**Drawer Option:** Built Into Frame

- Not Available on 6 Leg-



# BRENTWOOD

Shown in Matte Black Lacquer Finish on Maple

**Sizes:** 7 ft, 8 ft, 8 1/2 ft, 9 ft, 10 ft & 12 ft

**Wood Material:** Maple, Oak, Cherry or Walnut

**Finish Options:** All Olhausen® Finishes

**Drawer Option:** Built Into Frame



# CHICAGO

Shown in Matte Black Lacquer Finish on Maple

**Sizes:** 7 ft, 8 ft, 8 1/2 ft & 9 ft

**Wood Material:** Maple, Oak, Cherry or Walnut

**Finish Options:** All Olhausen® Finishes

**Drawer Option:** Built Into Frame

# INNSBRUCK

Shown in Traditional Pecan Finish on Maple

**Sizes:** 7 ft, 8 ft, 8 1/2 ft, 9 ft, 10ft & 12 ft

**Wood Material:** Maple, Oak, Cherry or Walnut

**Finish Options:** All Olhausen® Finishes

**Drawer Option:** Fits Under Frame



# HUNTINGTON

Shown in Cinnamon Finish on Maple

**Sizes:** 7 ft, 8 ft, 8 1/2 ft, 9 ft, 10ft & 12 ft

**Wood Material:** Maple, Oak, Cherry or Walnut

**Finish Options:** All Olhausen® Finishes

**Drawer Option:** Fits Under Frame



# KIRKWOOD

Shown in Traditional Mahogany on Maple

**Sizes:** 7 ft, 8 ft, 8 1/2 ft, 9 ft, 10ft & 12 ft

**Wood Material:** Maple, Oak, Cherry or Walnut

**Finish Options:** All Olhausen® Finishes

**Drawer Option:** Built Into Frame



# METRO

Shown in Matte Coral Ash on Maple

**Sizes:** 7 ft, 8 ft, 8 1/2 ft & 9 ft

**Wood Material:** Maple, Oak, Cherry or Walnut

**Finish Options:** All Olhausen® Finishes

**Drawer Option:** Fits Under Frame







## REMINGTON

Shown in Original Cherry Finish on Maple

**Sizes:** 7 ft, 8 ft, 8 1/2 f, 9 ft, 10 ft & 12 ft

**Wood Material:** Maple, Oak, Cherry or Walnut

**Finish Options:** All Olhausen® Finishes

**Drawer Option:** Built Into Frame

## SANTA ANA

Shown in Traditional Mahogany Finish on Maple

**Sizes:** 7 ft, 8 ft, 8 1/2 ft & 9 ft

**Wood Material:** Maple, Oak, Cherry or Walnut

**Finish Options:** All Olhausen® Finishes

**Drawer Option:** Built Into Frame



## BLACKHAWK

Shown in Matte Black Lacquer and Matte Brandywine on Tulipwood

**Sizes:** 6 ft, 7 ft, 8 ft, 8 1/2 ft & 9 ft

**Wood Material:** Tulip

\*\* Available in Maple, Oak, Cherry or Walnut \*\*

**Finish Options:** All Olhausen® Finishes

**Drawer Option:** Built Into Frame



## CLASSIC

Shown in Traditional Pecan Finish on Tulipwood

**Sizes:** 6 ft, 7 ft, 8 ft, 8 1/2 ft, 9 ft, 10 ft & 12 ft

**Wood Material:** Tulip

\*\* Available in Maple, Oak, Cherry or Walnut \*\*

**Finish Options:** All Olhausen® Finishes

**Drawer Option:** Fits Under Frame





# ECLIPSE

Shown in Matte Spring Cherry Finish on Cherry

**Sizes:** 6 ft, 7 ft, 8 ft, 8 1/2 ft & 9 ft

**Wood Material:** Tulip

\*\* Available in Maple, Oak, Cherry or Walnut \*\*

**Finish Options:** All Olhausen® Finishes

**Drawer Option:** Built Into Frame



# HAMPTON

Shown in Heritage Cherry Finish on Tulipwood

**Sizes:** 6 ft, 7 ft, 8 ft, 8 1/2 ft, 9 ft, 10 ft & 12 ft

**Wood Material:** Tulip

\*\* Available in Maple, Oak, Cherry or Walnut \*\*

**Finish Options:** All Olhausen® Finishes

**Drawer Option:** Built Into Frame



# NASHVILLE

Shown in Matte Slate Finish on Tulipwood

**Sizes:** 6 ft, 7 ft, 8 ft, 8 1/2 ft, 9 ft, 10 ft & 12 ft

**Wood Material:** Tulip

\*\* Available in Maple, Oak, Cherry or Walnut \*\*

**Finish Options:** All Olhausen® Finishes

**Drawer Option:** Built Into Frame



# RENO

Shown in Traditional Mahogany Finish on Tulipwood

**Sizes:** 6 ft, 7 ft, 8 ft, 8 1/2 ft & 9 ft

**Wood Material:** Tulip

**Finish Options:** All Olhausen® Finishes

**Drawer Option:** Not Available

# SHERATON

Shown in Matte Fossil Grey Finish on Tulipwood

**Sizes:** 6 ft, 7 ft, 8 ft, 8 1/2 ft & 9 ft

**Wood Material:** Tulip

**Finish Options:** All Olhausen® Finishes

**Drawer Option:** Fits Under Frame



# SOUTHERN

Shown in Cinnamon Finish on Tulipwood

**Sizes:** 6 ft, 7 ft, 8 ft, 8 1/2 ft, 9 ft, 10 ft & 12 ft

**Wood Material:** Tulip

\* Available in Maple, Oak, Cherry or Walnut \*

**Finish Options:** All Olhausen® Finishes

**Drawer Option:** Built Into Frame



# AMERICANA

Shown in Matte Traditional Mahogany Finish on Tulipwood

**Sizes:** 7 ft & 8 ft

**Wood Material:** Tulip

**Finish Options:** Limited Finish Options

**Drawer Option:** Not Available



# BELMONT

Shown in Matte Traditional Cherry Finish on Tulipwood

**Sizes:** 7 ft & 8 ft

**Wood Material:** Tulip

**Finish Options:** Limited Finish Options

**Drawer Option:** Not Available





## RENO

Shown in Matte Black Laminate

**Sizes:** 6 ft, 7 ft, 8 ft, 8 1/2 ft, 9 ft

**Laminate Material:** Black Laminate Only

**Drawer Option:** Not Available



## SHERATON

Shown in Matte Black Laminate

**Sizes:** 6 ft, 7 ft, 8 ft, 8 1/2 ft, 9 ft

**Laminate Material:** Black Laminate Only

**Drawer Option:** Fits Under Frame



# CHAMPION PRO II

Shown in Black Laminate with Black Metal Trim

**Sizes:** 7 ft, 8 ft, 8 1/2 ft, 9 ft, 10 ft & 12 ft

**Wood Material:** Solid Poplar

**Finish Options:** Various Laminate Colors Available

\* apron stickers available upon request \*

**Ball Return:** Available



# CHAMPION PRO III

Shown in Black Laminate with Black Metal Trim

**Sizes:** 7 ft, 8 ft, 8 1/2 ft, 9 ft, 10 ft & 12 ft

**Wood Material:** Solid Poplar

**Finish Options:** Various Laminate Colors Available

\* apron stickers available upon request \*

**Ball Return:** Available



# GRAND CHAMPION II

Shown in Black Laminate with Black Metal Trim

**Sizes:** 7 ft, 8 ft, 8 1/2 ft, 9 ft, 10 ft & 12 ft

**Wood Material:** Solid Poplar

**Finish Options:** Various Laminate Colors Available

\* apron stickers available upon request \*

**Ball Return:** Available



# GRAND CHAMPION III

Shown in Black Laminate with Black Metal Trim and  
Brushed Aluminum Apron Reveals

**Sizes:** 7 ft, 8 ft, 8 1/2 ft, 9 ft, 10 ft & 12 ft

**Wood Material:** Solid Poplar

**Finish Options:** Various Laminate Colors Available

\* apron stickers available upon request \*

**Ball Return:** Available



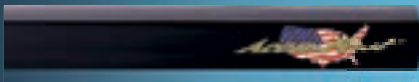
# OLHAUSEN®

## WHY WE'RE THE BEST IN BILLIARDS!

*(and why we're able to offer a lifetime warranty!)*

### ACCU-FAST®

- Accu-Fast® cushions are the best playing cushions in the business
- We invite you to take the Accu-Fast® Challenge: "JUST PLAY ON IT"



### PREMIUM SLATE

- The world's finest slate is diamond honed to create the perfect playing surface
- Each piece of slate is rechecked at our factory for flatness and proper bolt-hole locations.



### T-NUT RAIL CONSTRUCTION

- Won't bend and cross-thread
- Precise alignment
- Longer thread grip
- Easy installation and removal
- Eliminates hollow spots under cushions



### FACTORY PRE-FIT FRAME CONSTRUCTION

- Built in our factory not in your home
- Pre-leveled and squared for faster, cleaner installation
- Allows for triple-check quality control before shipping
- KD-able for difficult installations



### SLATE LINER

- Framing the slate ensures quieter play and reduces the stress on the slate
- Allows a tighter, faster, professional cloth installation
- We bolt through the slate liner to eliminate vibration that can cause the rail bolts to loosen



### UNILINER

- Large slate-support area
- Quick, more accurate installation
- Helps keep slate flat and level
- Minimizes wood movement
- Uniliner® tested, almost twice as strong as other frame construction methods

### PREMIUM WOOD

- Olhausen purchases the majority of its lumber from the Northeastern US where "slow-growth" trees have tighter grains
- Tighter grains mean minimal discoloring
- It's simple: Better wood makes for a better table

## America's Favorite Pool Table

WE BUILD OUR POOL TABLES. WE STAND BEHIND THEM.  
ALWAYS HAVE. ALWAYS WILL.

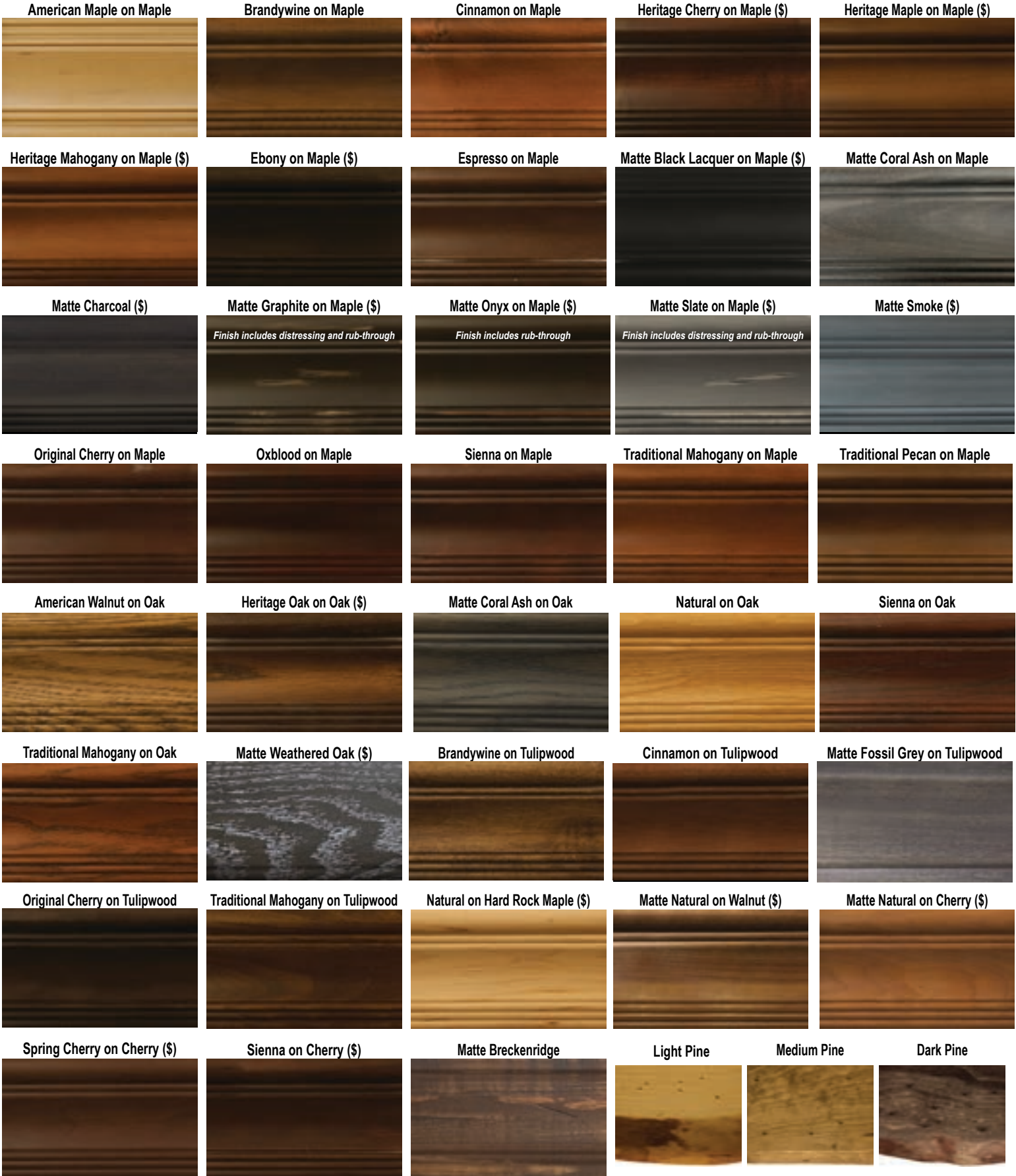
With Over 50 Years of Experience, Your Peace of Mind is Guaranteed  
and so is Your Investment



PROUDLY MADE  
IN THE USA

*The Best in Billiards*®

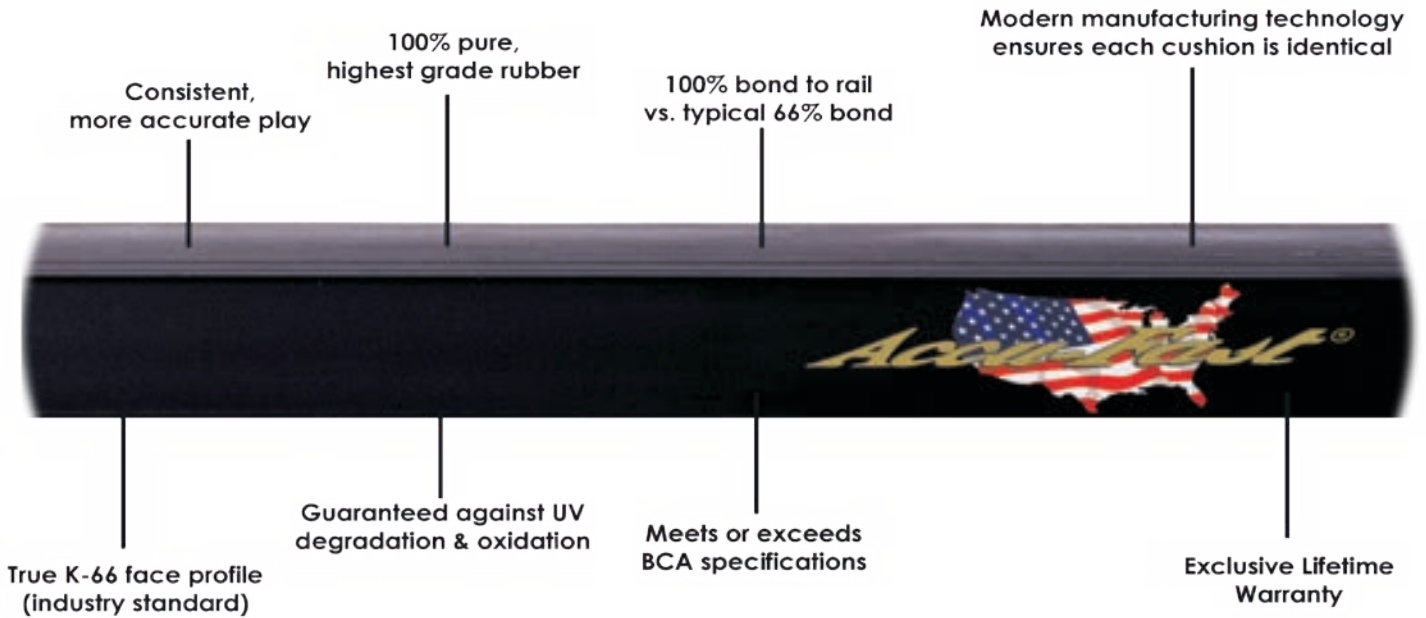
OLHAUSEN'S QUALITY LINE OF FINISHES  
PROUDLY MADE IN THE USA



(\$ ) denotes upcharge



# OLHAUSEN'S EXCLUSIVE ACCU-FAST CUSHIONS MADE IN THE USA!



THE CHART BELOW WILL HELP YOU DETERMINE THE TABLE SIZE THAT'S BEST FOR YOUR GAME ROOM. THE 8FT IS THE MOST POPULAR SIZE TABLE FOR THE HOME.  
\*\* The standard cue length is 58" \*\*

Minimum Room Size According to Cue Length

Overall Table Size	Actual Playing Surface	48 in Cue	52 in Cue	58 in Cue
7 FT.	39" x 78"	11' 3" x 14' 6"	11' 11" x 15' 2"	12' 11" x 16' 2"
8 FT.	44" x 88"	11' 8" x 15' 4"	12' 4" x 16'	13' 4" x 17'
8.5 FT.	46" x 92"	11' 10" x 15' 8"	12' 6" x 16' 4"	13' 6" x 17' 4"
9 FT.	50" x 100"	12' 2" x 16' 4"	12' 10" x 17'	13' 10" x 18'

# R&R OUTDOORS

LIFE IS BETTER PLAYED OUTSIDE

NOW  
MANUFACTURED BY

**OLHAUSEN®**

*The Best in Billiards*

## *Features & Benefits:*

- 10 POWDER COAT CHOICES TO MATCH YOUR OUTDOOR AREA
- MARINE GRADE ALUMINUM – BUILT LIKE A BOAT
- 3-PIECE 1" BRAZILIAN SLATE – FEATURING ACCU-FAST CUSHIONS
- AUTHENTIC SUNBRELLA SURFACE – LEGS WITH LEVELERS FOR PERFECT PLAY

[RANDROUTDOORFUN.COM](http://RANDROUTDOORFUN.COM)

# OLHAUSEN®

## WHY WE'RE THE BEST IN SHUFFLEBOARDS!

Solid American  
Maple Playfield

Durable Two Part Polymer  
Playing Surface

American Hardwood  
Construction with  
1 1/2" Thick Solid  
Cabinets

Available in Over  
30 Unique Models  
and Finishes

Exclusive Accu-Lock  
Leveling System -

Ensures perfect level and eliminates  
time consuming re-adjustments  
associated with conventional  
adjusters

Multiple Leg Options -  
We have leg designs that will  
fit in any room decor

Cross Brace  
Construction -  
Added rigidity to ensure  
table stability

Custom Graphics  
Available -  
Have your playfield  
personalized with your own  
custom logo

American Made -  
Not only assembled in our factory,  
but designed, engineered and built  
in the USA



## OLHAUSEN SHUFFLEBOARD TABLES

FEATURING THE EXCLUSIVE ACCU-LOCK®  
PLAYFIELD ADJUSTMENT SYSTEM

With Over 50 Years of Experience, Your Peace of Mind is Guaranteed  
and so is Your Investment



PROUDLY MADE  
IN THE USA

# ALCOVE

Shown in Matte Black Lacquer on Maple

**Sizes:** 9 ft, 12 ft, 14 ft

**Playfield:** 20" Solid Maple with 1/4" polymere surface

**Wood Material:** Maple or Oak

**Finish Options:** All Olhausen® Finishes



# ENCORE

Shown in Traditional Mahogany Finish on Maple

**Sizes:** 9 ft, 12 ft, 14 ft, 16 ft, 18 ft, 20 ft & 22 ft

**Playfield:** 20" Solid Maple with 1/4" polymere surface

**Wood Material:** Maple, Oak or Special Veneer

**Finish Options:** All Olhausen® Finishes and Special Veneer Finshes



# HERITAGE

Shown in Matte Lacquer Finish on Maple with Natural Maple Apron Accents and Brushed Aluminum Trim

**Sizes:** 9 ft, 12 ft, 14 ft, 16 ft, 18 ft, 20 ft & 22 ft

**Playfield:** 20" Solid Maple with 1/4" polymere surface

**Wood Material:** Maple

**Finish Options:** All Olhausen® Finishes



# LAGUNA

Shown in Matte Traditional Mahogany on Maple

**Sizes:** 9 ft, 12 ft, 14 ft, 16 ft, 18 ft, 20 ft & 22 ft

**Playfield:** 20" Solid Maple with 1/4" polymere surface

**Wood Material:** Maple, Oak, Cherry or Walnut

**Finish Options:** All Olhausen® Finishes





## MADISON

Shown in Matte Black Lacquer on Maple

**Sizes:** 9 ft, 12 ft, 14 ft, 16 ft, 18 ft, 20 ft & 22 ft

**Playfield:** 20" Solid Maple with 1/4" polymere surface

**Wood Material:** Maple, Oak, Cherry, Walnut or Laminate  
\* upgraded brushed or polished aluminum available \*

**Finish Options:** All Olhausen® Finishes



## MAVERICK

Shown in Matte Fossil Grey on Tulipqwood

**Size:** 9 ft only

**Playfield:** 20" Solid Maple with 1/4" polymere surface

**Wood Material:** Tulip

**Finish Options:** Matte Fossil Grey only



## MONARCH

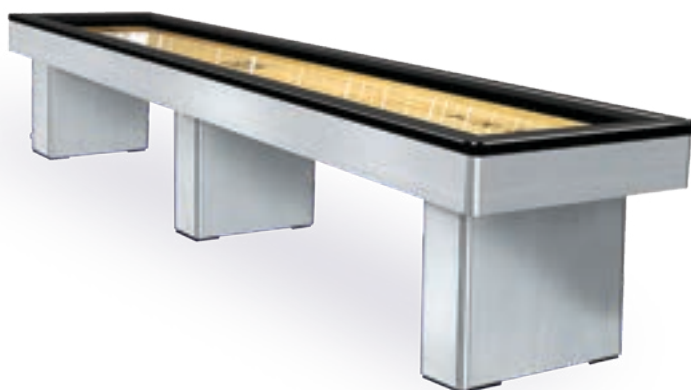
Shown in Brushed Aluminum Metal with  
Matte Black Lacquer on Maple Rails

**Sizes:** 9 ft, 12 ft, 14 ft, 16 ft, 18 ft, 20 ft & 22 ft

**Playfield:** 20" Solid Maple with 1/4" polymere surface

**Wood Material:** Maple, Oak, Cherry, Walnut or Laminate  
\* upgraded brushed or polished aluminum available \*

**Finish Options:** All Olhausen® Finishes



# REGENT

Shown in Colorado Laminate and Brushed Aluminum

**Sizes:** 12 ft, 14 ft & 16 ft

**Playfield:** 20" Solid Maple with 1/4" polymere surface

**Wood Material:** Special Laminate and Brushed Aluminum

**Finish Options:** Colorado or Arizona Laminate only



# SAHARA

Shown in Matte Black Lacquer Finish on Maple with Brushed Aluminum Trim

**Sizes:** 9 ft, 12 ft, 14 ft, 16 ft, 18 ft, 20 ft & 22 ft

**Playfield:** 20" Solid Maple with 1/4" polymere surface

**Wood Material:** Maple, Oak, Cherry or Walnut

**Finish Options:** All Olhausen® Finishes



# WATERFALL

Shown in Brushed Aluminum with Matte Black Rails

**Sizes:** 9 ft, 12 ft, 14 ft, 16 ft & 18 ft

**Playfield:** 20" Solid Maple with 1/4" polymere surface

**Wood Material:** Maple, Oak, Cherry, Walnut or Laminate

\* upgraded brushed or polished aluminum available \*

**Finish Options:** All Olhausen® Finishes



# WEST END

Shown in Matte Smoke Finish on Maple

**Sizes:** 9 ft, 12 ft, 14 ft, 16 ft, 18 ft, 20 ft & 22 ft

**Playfield:** 20" Solid Maple with 1/4" polymere surface

**Wood Material:** Maple, Oak, Cherry or Walnut

**Finish Options:** All Olhausen® Finishes





# YORK

Shown in Cinnamon Finish on Maple

**Sizes:** 9 ft, 12 ft, 14 ft, 16 ft, 18 ft, 20 ft & 22 ft

**Playfield:** 16" & 20" Solid Maple with 1/4" polymere surface

**Wood Material:** Maple, Oak, Cherry or Walnut

**Finish Options:** All Olhausen® Finishes

Every Olhausen Shuffleboard features



**Exclusive**  
Accu-Lock  
leveling  
system



**Made in**  
the USA



**Custom**  
Logo on  
Playfield  
Option



**Lifetime**  
Warranty



## BRECKENRIDGE

Shown in Matte Breckenridge Finish on Pine

**Sizes:** 9 ft, 12 ft, 14 ft, 16 ft, 18 ft, 20 ft & 22 ft

**Playfield:** 20" Solid Maple with 1/4" polymere surface

**Wood Material:** Pine

**Finish Options:** Matte Breckenridge Finish



## DURANGO

Shown in Matte Fossil Grey on Pine

**Sizes:** 9 ft, 12 ft, 14 ft, 16 ft, 18 ft, 20 ft & 22 ft

**Playfield:** 20" Solid Maple with 1/4" polymere surface

**Wood Material:** Pine

**Finish Options:** Matte Fossil Grey or  
Matte Breckenridge only







## PONDEROSA

Shown in Matte Medium Finish on Pine

**Sizes:** 9 ft, 12 ft, 14 ft, 16 ft, 18 ft, 20 ft & 22 ft

**Playfield:** 20" Solid Maple with 1/4" polymere surface

**Wood Material:** Pine

**Finish Options:** Light, Medium or Dark Finish only



## RAILYARD

Shown in Matte Railyard Finish on Hickory

**Sizes:** 9 ft, 12 ft, 14 ft, 16 ft, 18 ft, 20 ft & 22 ft

**Playfield:** 20" Solid Maple with 1/4" polymere surface

**Wood Material:** Hickory

**Finish Options:** Matte Railyard Finish

**Special Features:** Reclaimed Train Rail and Re-purposed Hardwood Timbers from Century Old Railroads



## TAOS

Shown in Matte Taos Finish on Oak

**Sizes:** 9 ft, 12 ft, 14 ft, 16 ft, 18 ft, 20 ft & 22 ft

**Playfield:** 20" Solid Maple with 1/4" polymere surface

**Wood Material:** Maple or Oak

**Finish Options:** All Olhausen® Finishes



## TIMBER RIDGE

Shown in Matte Timber Ridge Finish on Pine

**Sizes:** 9 ft, 12 ft, 14 ft, 16 ft, 18 ft, 20 ft & 22 ft

**Playfield:** 20" Solid Maple with 1/4" polymere surface

**Wood Material:** Pine

**Finish Options:** Matte Timber Ridge Finish





## TUSTIN

Shown in Matte Weathered Oak Finish on Oak

**Sizes:** 9 ft, 12 ft, 14 ft, 16 ft, 18 ft, 20 ft & 22 ft

**Playfield:** 20" Solid Maple with 1/4" polymere surface

**Wood Material:** Maple or Oak

**Finish Options:** All Olhausen® Finishes



## YOUNGSTOWN

Shown in Matte Youngstown Finish on Oak

**Sizes:** 9 ft, 12 ft, 14 ft, 16 ft, 18 ft, 20 ft & 22 ft

**Playfield:** 16" Solid Maple with 1/4" polymere surface

**Wood Material:** Maple or Oak

**Finish Options:** All Olhausen® Finishes



## ST. ANDREWS I

Shown in Heritage Mahogany Finish on Maple

**Sizes:** 9 ft, 12 ft, 14 ft, 16 ft, 18 ft, 20 ft & 22 ft

**Playfield:** 20" Solid Maple with 1/4" polymere surface

**Wood Material:** Maple, Oak, Cherry or Walnut

**Finish Options:** All Olhausen® Finishes



## ST. ANDREWS III

Shown in Heritage Mahogany Finish on Maple

**Sizes:** 9 ft, 12 ft, 14 ft, 16 ft, 18 ft, 20 ft & 22 ft

**Playfield:** 20" Solid Maple with 1/4" polymere surface

**Wood Material:** Maple, Oak, Cherry or Walnut

**Finish Options:** All Olhausen® Finishes





## ST. GEORGE

Shown in American Maple on Oak

**Sizes:** 9 ft, 12 ft, 14 ft, 16 ft, 18 ft, 20 ft & 22 ft

**Playfield:** 20" Solid Maple with 1/4" polymere surface

**Wood Material:** Maple, Oak, Cherry or Walnut

**Finish Options:** All Olhausen® Finishes



## ST. LEONE

Shown in Matte Custom Finish on Maple

**Sizes:** 14 ft, 16 ft & 22 ft

**Playfield:** 20" Solid Maple with 1/4" polymere surface

**Wood Material:** Maple, Oak, Cherry or Walnut

**Finish Options:** All Olhausen® Finishes



## VENETIAN

Shown in Matte Black Lacquer Finish on Maple

**Sizes:** 9 ft, 12 ft, 14 ft, 16 ft, 18 ft, 20 ft & 22 ft

**Playfield:** 20" Solid Maple with 1/4" polymere surface

**Wood Material:** Maple, Oak, Cherry or Walnut

**Finish Options:** All Olhausen® Finishes



## BRENTWOOD

Shown in Matte Custom Finish on Maple

**Sizes:** 9 ft, 12 ft, 14 ft, 16 ft, 18 ft, 20 ft & 22 ft

**Playfield:** 20" Solid Maple with 1/4" polymere surface

**Wood Material:** Maple, Oak, Cherry or Walnut

**Finish Options:** All Olhausen® Finishes



## CHICAGO

Shown in Cinnamon Finish on Maple

**Sizes:** 9 ft, 12 ft, 14 ft, 16 ft, 18 ft, 20 ft & 22 ft

**Playfield:** 20" Solid Maple with 1/4" polymere surface

**Wood Material:** Maple, Oak, Cherry or Walnut

**Finish Options:** All Olhausen® Finishes



## ECLIPSE

Shown in Espresso Finish on Maple

**Sizes:** 9 ft, 12 ft, 14 ft, 16 ft, 18 ft, 20 ft & 22 ft

**Playfield:** 20" Solid Maple with 1/4" polymere surface

**Wood Material:** Maple, Oak, Cherry or Walnut

**Finish Options:** All Olhausen® Finishes

**Leg Options:** 12 different leg options available





## HAMPTON

Shown in Heritage Mahogany Finish on Tulipwood

**Sizes:** 9 ft, 12 ft, 14 ft, 16 ft, 18 ft, 20 ft & 22 ft

**Playfield:** 20" Solid Maple with 1/4" polymere surface

**Wood Material:** Tulip

(Available in Maple, Oak, Cherry or Walnut)

**Finish Options:** All Olhausen® Finishes



## PAVILION

Shown in Cinnamon Finish on Tulipwood

**Sizes:** 9 ft, 12 ft & 14 ft

**Playfield:** 16" Solid Maple with 1/4" polymere surface

**Wood Material:** Tulip

**Finish Options:** All Olhausen® Finishes



## REMINGTON

Shown in Matte Custom Finish on Maple

**Sizes:** 9 ft, 12 ft, 14 ft, 16 ft, 18 ft, 20 ft & 22 ft

**Playfield:** 20" Solid Maple with 1/4" polymere surface

**Wood Material:** Maple, Oak, Cherry or Walnut

**Finish Options:** All Olhausen® Finishes





1124 Vaughn Parkway, Portland TN 37148  
Phone (615) 323-8522 • Fax (615) 323-7585  
Toll Free (800) 866-4606

[www.olhausenbilliards.com](http://www.olhausenbilliards.com)